



LJ Elfegos Princess

Date of Birth: 03/11/2022
Registration 1: CI336522



Courtesy of Laying J Land and Cattle Company

LJ Elfegos Princess



Elfego



LTL PRINCESS MONA 803



Saddlehorn



JESTER



WS VINDICATOR



JH MONACO'S REFUGE



SADDLE TRAMP 601



FOOTLOOSE 526



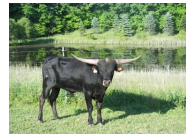
WINCHESTER



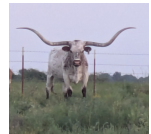
JuJu



AUSTIN TEXA 260



WS SUN STAR



MONACO CHEX



DOUBLE L REFUGE



<http://www.hiredhandsoftware.com>